

DBR YAMAHA BLASTER NERF BAR INSTALL INSTRUCTIONS

STEP 1 - Remove stock foot pegs and heel guards.

STEP 2 - Loosely mount the front cross bar by removing the OEM motor mount bolt and using the supplied 7" long bolt and spacers as shown in the diagram.

STEP 3 - Install foot peg mounts loosely. (Install brake pedal in the OEM configuration, according to the manual)

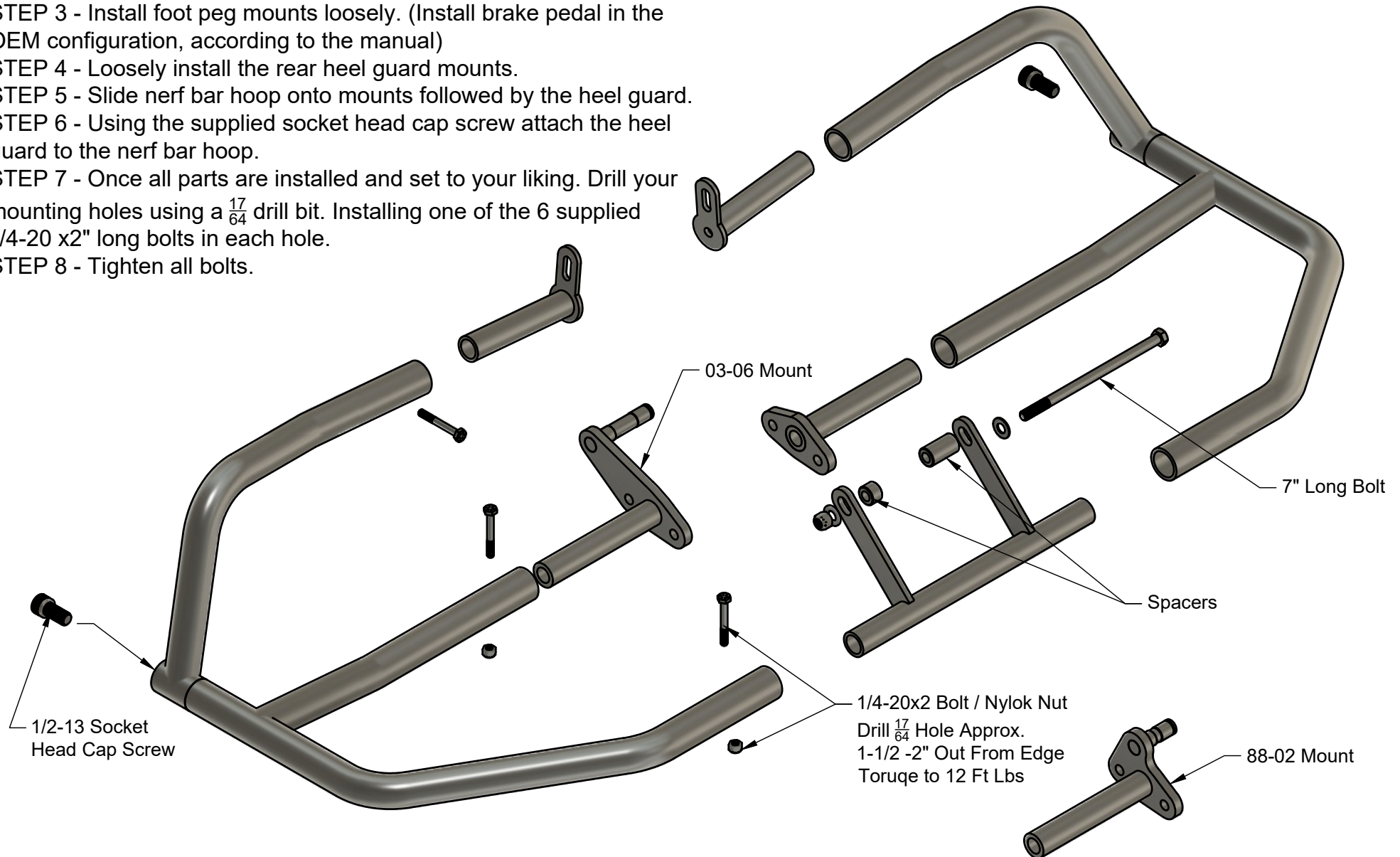
STEP 4 - Loosely install the rear heel guard mounts.

STEP 5 - Slide nerf bar hoop onto mounts followed by the heel guard.

STEP 6 - Using the supplied socket head cap screw attach the heel guard to the nerf bar hoop.

STEP 7 - Once all parts are installed and set to your liking. Drill your mounting holes using a $\frac{17}{64}$ drill bit. Installing one of the 6 supplied 1/4-20 x2" long bolts in each hole.

STEP 8 - Tighten all bolts.



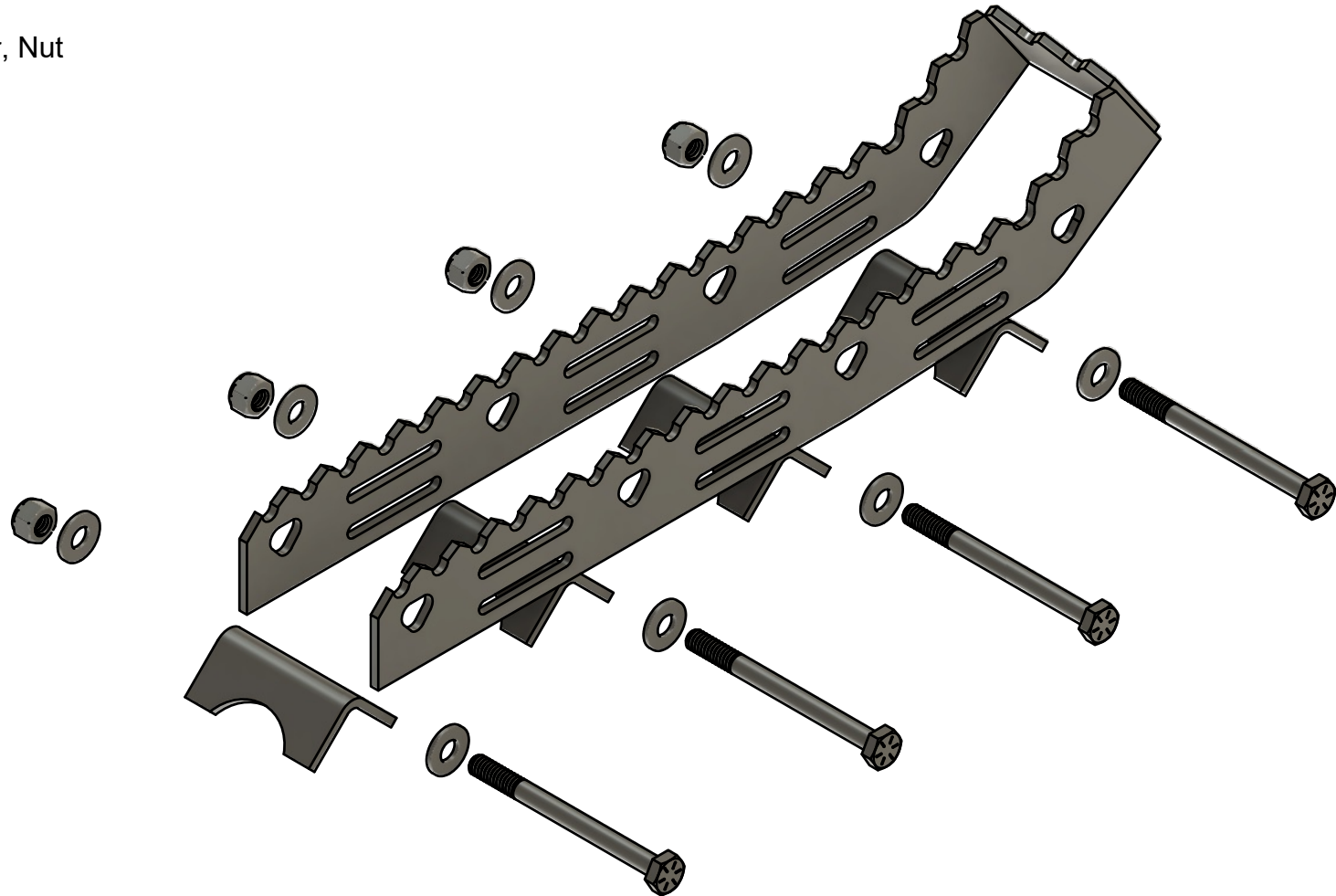
DBR YAMAHA BLASTER NERF BAR INSTALL INSTRUCTIONS

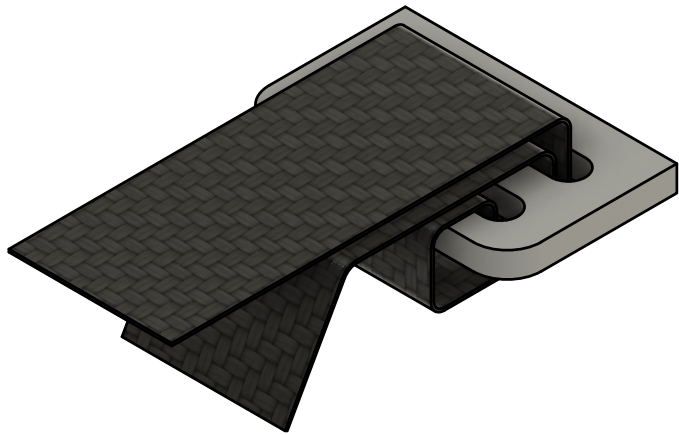
Peg Install Instructions -

STEP 1 - Slide peg over peg mounts, with peg going towards outside of nerf bar hoop.

STEP 2 - Install 4 - 1/4-20 x 3 bolts through the triangular mounting holes. The slotted holes are for the nets. Torque to 12 Ft Lbs.

Bolt, Washer, Washer, Nut

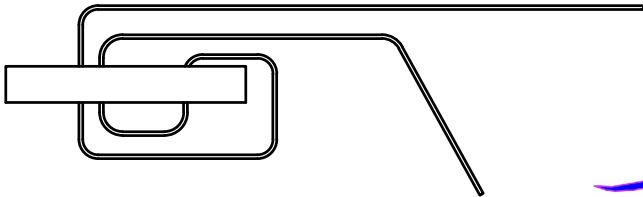




THANK YOU FOR YOUR PURCHASE
OF DBR NERF BARS!

WE PRIDE OURSELVES IN TOP
QUALITY PRODUCTS AND OUR NETS
ARE SECOND TO NONE!

THIS DRAWING SHOWS HOW TO
INSTALL OUR NETS.



		PROJECT			
		DBR			
		TITLE			
		Net Install Instructions			
APPROVED		SIZE	CODE	DWG NO	REV
CHECKED		A			
DRAWN	Chris Borning	6/14/2024	SCALE 1:1	WEIGHT	SHEET 1/1