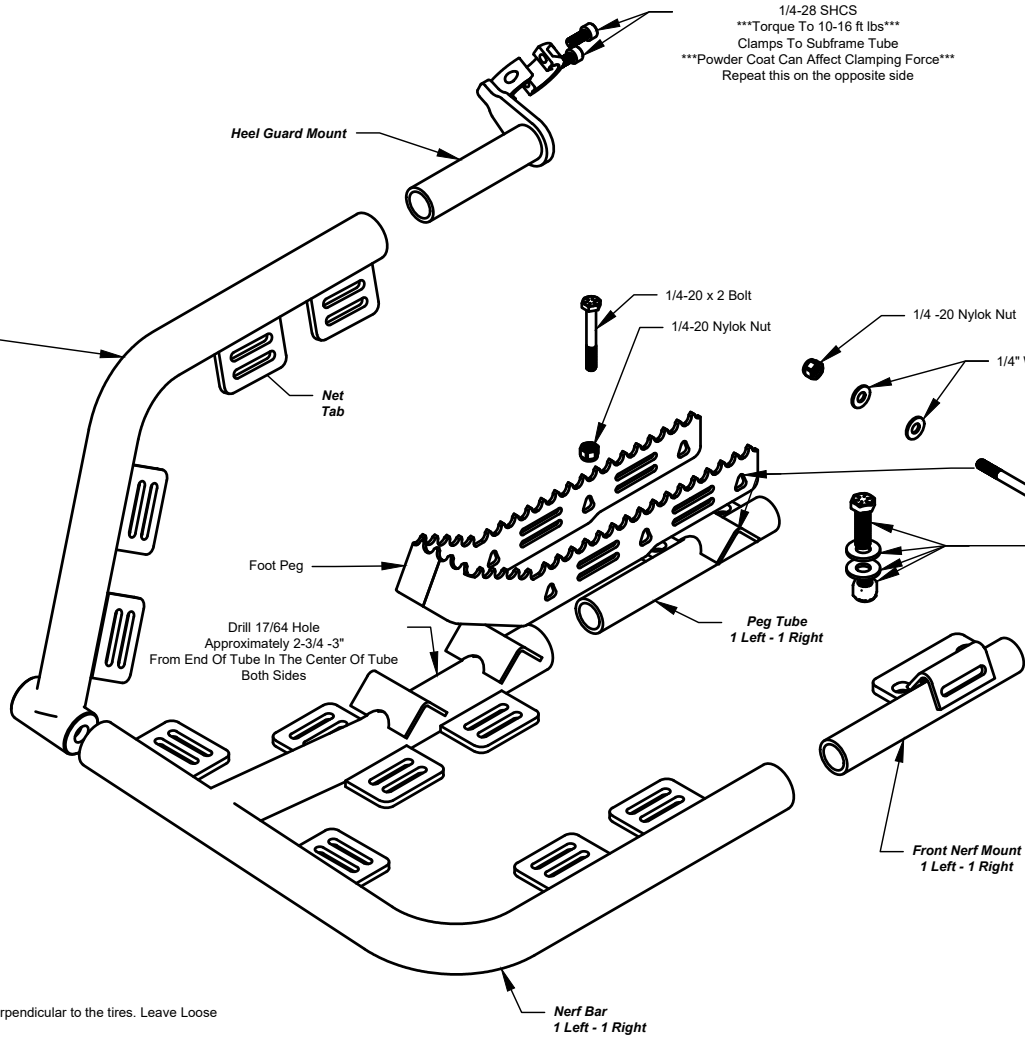




DRR DRX NERF BAR INSTALL INSTRUCTIONS



1/4-28 SHCS
 Torque To 10-16 ft lbs
 Clamps To Subframe Tube
 Powder Coat Can Affect Clamping Force
 Repeat this on the opposite side

Assemble In This Order:
 Bolt - Threads Going Towards Heel Guard
 Washer
 Washer
 Nylock Nut
 Torque to 9 ft lbs
 3 Per Side In Triangular Holes

1/4-20 x 3 Gr8 Bolt
 3 Per Side
 Mounts Thru Foot Peg

3/8-16 x 1-1/4 Bolt
 5/16 Washer
 Front Nerf Mount or Peg Mount
 5/16 Washer
 3/8-16 Nylok Nut

In This Order
 Bolt Thru Frame Mounts Where Plastic Foot Wells Were
 These Bolts Attach The Front Nerf Mount and Peg Tube Mounts To Frame
 Torque to 33 ft lbs

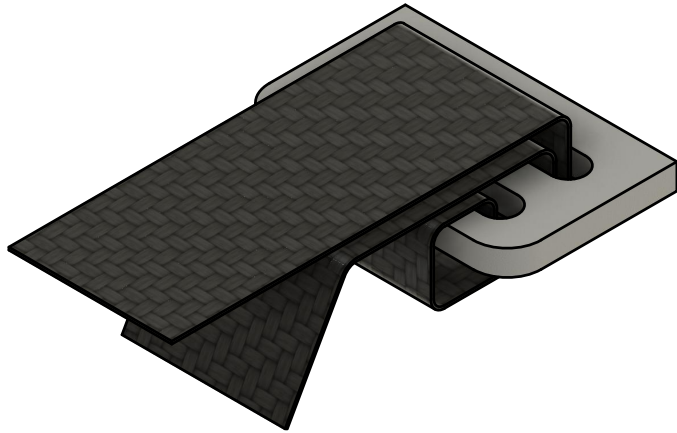
1/2-13 x 1-1/4 SHCS
 1 Per Side
 Torque Between 35-45 ft lbs
 Tip: Use Antiseize On Threads To Prevent Galling
 Antivibe Lock Washer
 1 Per Side
 Put 1/2-13 SHCS Thru Washer

1. Start by installing the Front Nerf Mount to Frame with Front Edge Of Tube Perpendicular to the tires. Leave Loose
2. Install The Peg Tube.
3. Both Of These Mounts Go In Place Of The Original Foot Well.
4. Loosely Attach The Heel Guard Mount To The Sub Frame Tube.
5. Loosely Attach The Heel Guard To The Nerf Bar.
6. Loosely Attach Foot Peg To Nerf Bar.
7. Install Nets Per Instructions.
8. Once Nets Are Installed and All Parts Are On. You Can Start To Tighten The Hardware To The Torque Specs Listed Above
9. Drill A 17/64 Hole To Create A Mechanical Attachment Between The Nerf Bar and Peg Mount. You Shall do this at the 2 other mounting locations. i.e. Heel Guard Mount and Front Mount.
10. Install 1/4-20 x 2 Bolts In The Drilled Holes.

Give One Final Check, To Check For Bolts That May Have Been Missed When Tightening.

TIP Once A Fastener Is Torqued, Use A Paint Marker On The Head or Nut Of The Fastener To Indicate It Has Been Torqued.

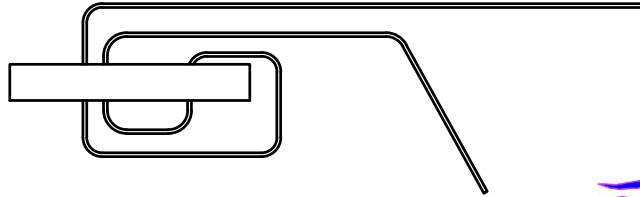
- DRR DRX NERF BAR KIT
- 1 - Left Nerf Bar
 - 1 - Right Nerf Bar
 - 1 - Left Heel Guard
 - 1 - Right Heel Guard
 - 1 - Left Peg Tube
 - 1 - Right Peg Tube
 - 1 - Left Front Nerf Mount
 - 1 - Right Front Nerf Mount
 - 2 - Foot Pegs
 - 2 - Front Net Sections
 - 2 - Rear Net Sections
 - 2 - Heel Guard Mounts
 - 1 - Hardware Kit
- Hardware Kit Consists Of:
- 6 - 1/4-20 x 2 Gr8 Bolts w/ Nylok Nuts
 - 6 - 1/4-20 x 3 Gr Bolts w/ Washers and Nylok Nuts
 - 2 - 1/2-13 x 1-1/4 Socket Head Cap Screws
 - 2 - Antivibe Lock Washers
 - 8 - 3/8-16 x 1-1/4 Bolts Washers and Nuts
 - 4 - 1/4-28 x 3/4 Socket Head Cap Screws (Rear Clamps)



THANK YOU FOR YOUR PURCHASE
OF DBR NERF BARS!

WE PRIDE OURSELVES IN TOP
QUALITY PRODUCTS AND OUR NETS
ARE SECOND TO NONE!

THIS DRAWING SHOWS HOW TO
INSTALL OUR NETS.



	PROJECT			
	DBR			
	TITLE			
	Net Install Instructions			
APPROVED	SIZE	CODE	DWG NO	REV
CHECKED	A			
DRAWN	Chris Borning	6/14/2024	SCALE 1:1	WEIGHT
				SHEET 1/1